

Summit Theatron™ Automated Rigging System

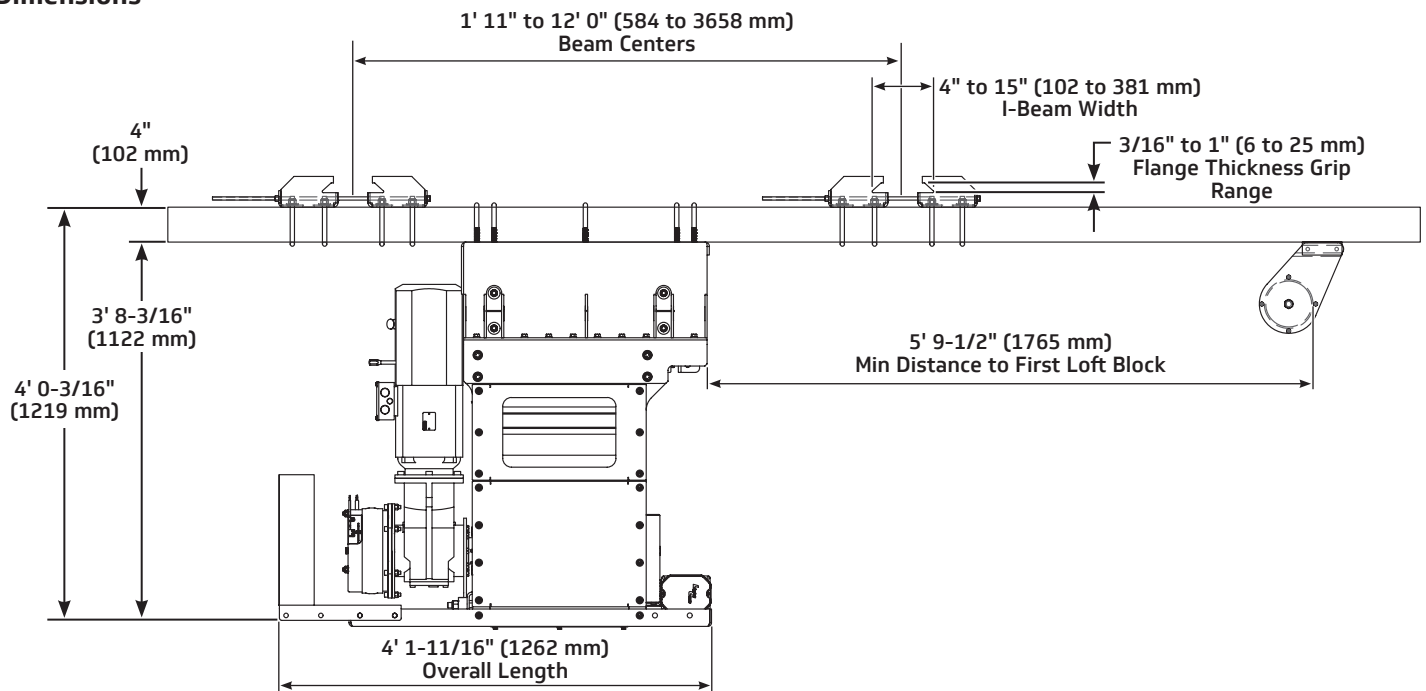
Summit Theatron is an economical, high-performance, automated hoist available in variable speeds. Its versatile mounting system enables Summit Theatron to be installed in virtually any space. It's ideal for many stage hoisting applications.

- Load sensing standard
- Overload protection standard
- Position tracking standard using an absolute encoder
- Redundant limit switches standard (up, down, up overtravel, down overtravel)
- Dual brakes
- Three-year warranty against defects in materials or workmanship is provided on all J.R. Clancy equipment, additional warranty information is available at jrclancy.com

Lift Lines and Travel

- Up to 55' (16.8 m) of travel with eight or fewer lift lines
- Optional continuous beam

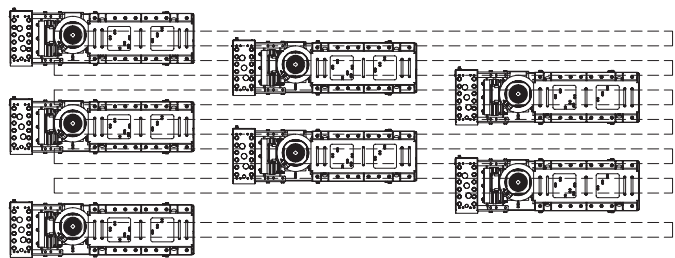
Dimensions



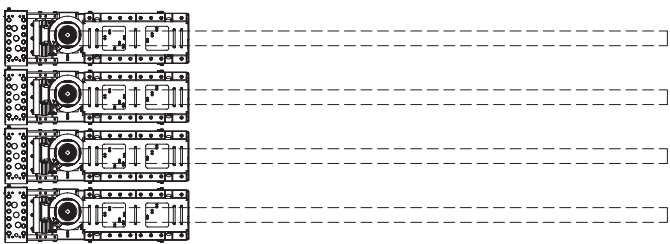
Models

Part Number	Load Speed	Hoist Gross Capacity	Hoist Weight	Amp Draw	
				208 V	480 V
018-S0322-2	0-30 fpm (0-9.1 m/min)	2200 lb (998 kg)	870 lb (395 kg)	12.4	-
018-S0322-4	0-30 fpm (0-9.1 m/min)	2200 lb (998 kg)	870 lb (395 kg)	-	5.4
018-S2115-4	0-205 fpm (0-62.5 m/min)	1500 lb (680 kg)	848 lb (385 kg)	-	14.8

Center to Center Spacing Options

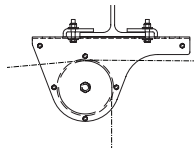


8" (203 mm) Set centers with hoists offset

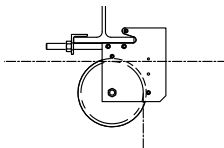


16" (406 mm) Set centers with all hoists adjacent to each other

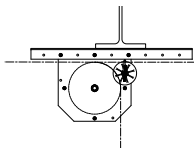
Loft Block Options



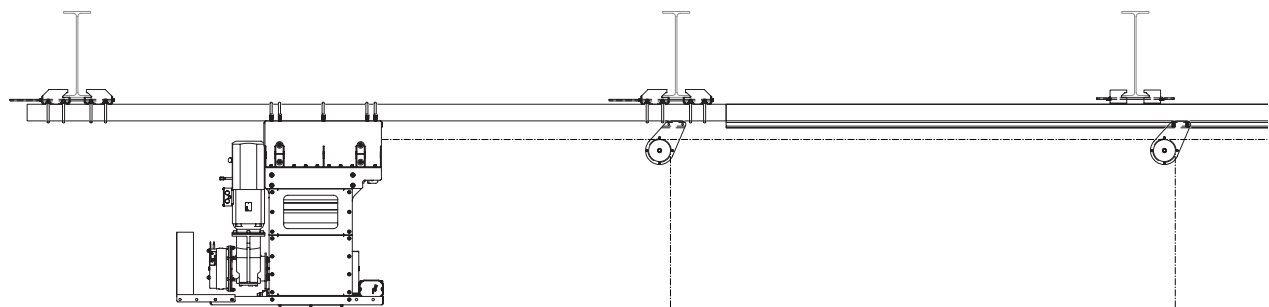
8055 Series loft blocks –
underhung



19 Series loft blocks –
underhung



Universal loft blocks –
upright or underhung



Continuous beam mounted loft blocks – underhung

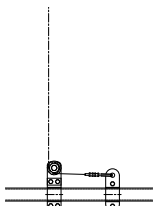
Batten Attachment Options



Trim Chain/Alpha
Chain



Pipe Clamp and
Turnbuckle

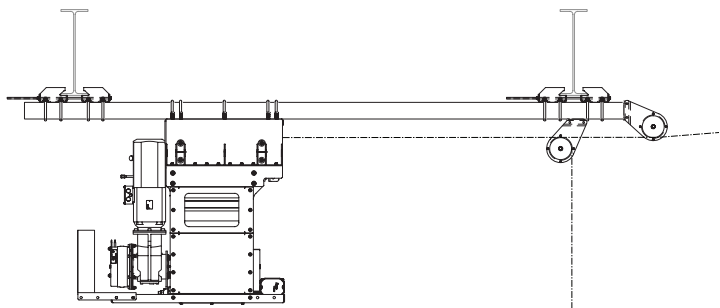


Batten Trim
Clamp

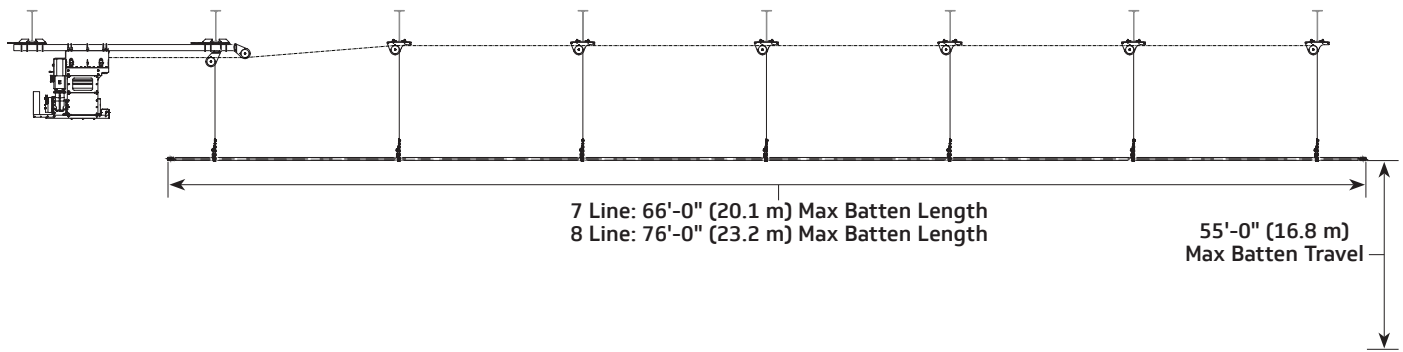


Batten Trim
Plate

Mounting Orientation Options

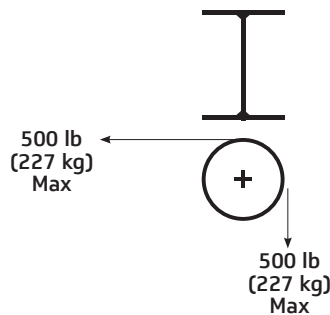


Continuous beam mounted loft blocks – underhung



Loading Information

The combined load on the lift lines associated with a single Summit Theatron hoist will not exceed the hoist capacity. Loads may be unevenly distributed on the batten with a maximum load of 500 lb (227 kg) on any individual lift line.



Calculating Live Load Capacity:

	Total hoist capacity:	
minus	Batten weight:	(3 lb/ft for each schedule 40 pipe batten and approximately 7 lb/ft for each connector strip)
minus	Pantograph weight:	(Approx 250 lb for 25' of travel and 350 lb for 50' of travel)
equals	Live Load Capacity:	Please contact your sales rep for additional configurations

Notes:

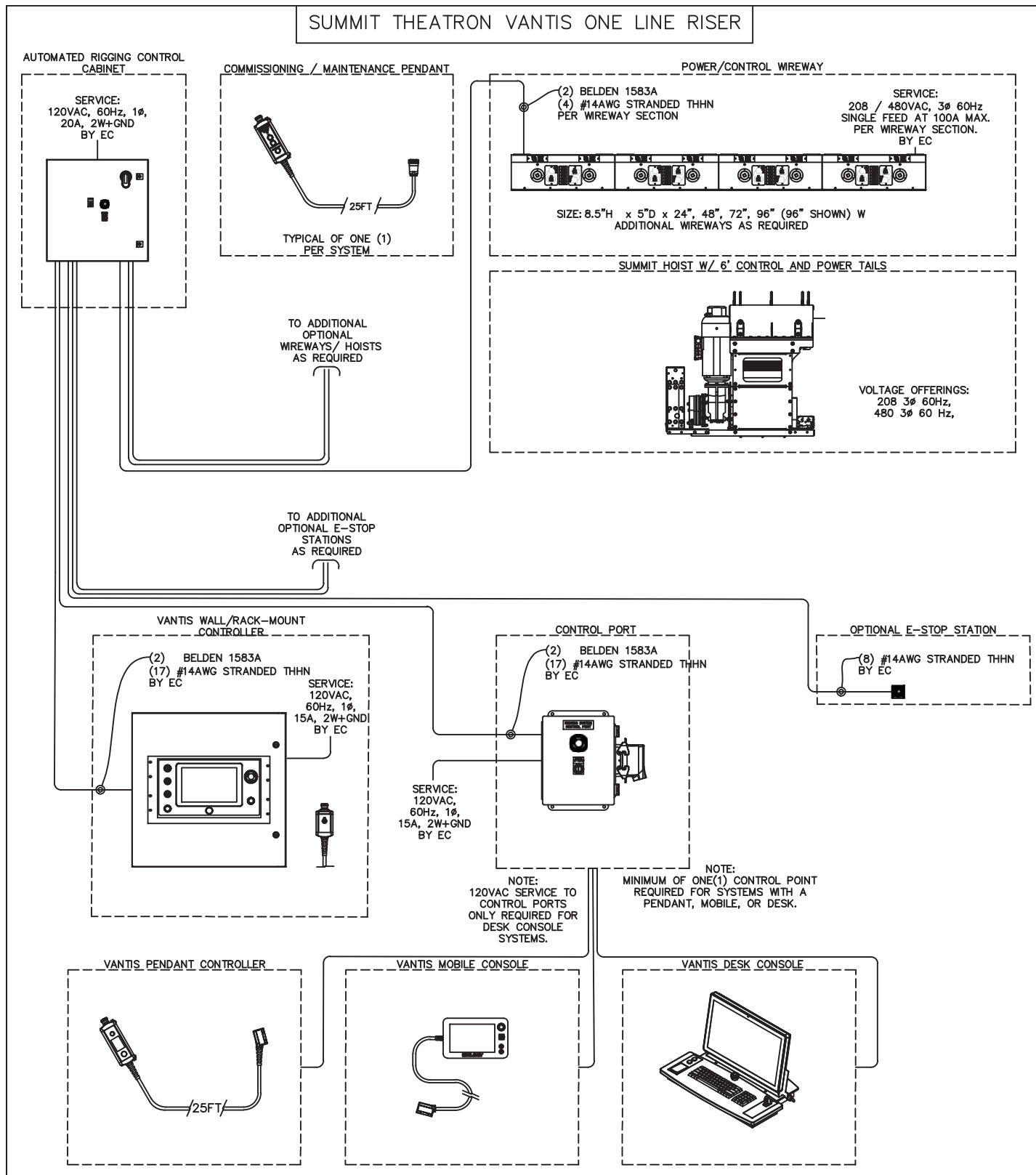
- Systems with 5 lift lines may need to be de-rated to 1750 lb (794 kg) in order to prevent overloading of a single lift line
- Systems with 4 lift lines may need to be de-rated to 1350 lb (612 kg) in order to prevent overloading of a single lift line

For minimum stacking height

We recommend that the closest contact point be at least 6" (154 mm) away from the nearest obstruction.

Batten connection type, hoist location, loft block type, cable management and building architecture can impact stacking height.

Summit Theatron Riser — Typical



Wenger

JRCLANCY

GEARBOSS

© 2025 Wenger Corporation
 USA/2025-05

Minnesota Location

Wenger Phone 800.4WENGER (493-6437) Wenger Worldwide +1.507.455.4100 | Parts & Service 800.887.7145 | wengercorp.com
 GearBoss Phone 800.493.6437 | gearboss.com
 555 Park Drive, PO Box 448 | Owatonna | MN 55060

New York Location

J.R. Clancy Phone 800.836.1885 JR Clancy Worldwide +1.315.451.3440 | jrclancy.com | 7041 Interstate Island Road | Syracuse | NY 13209